



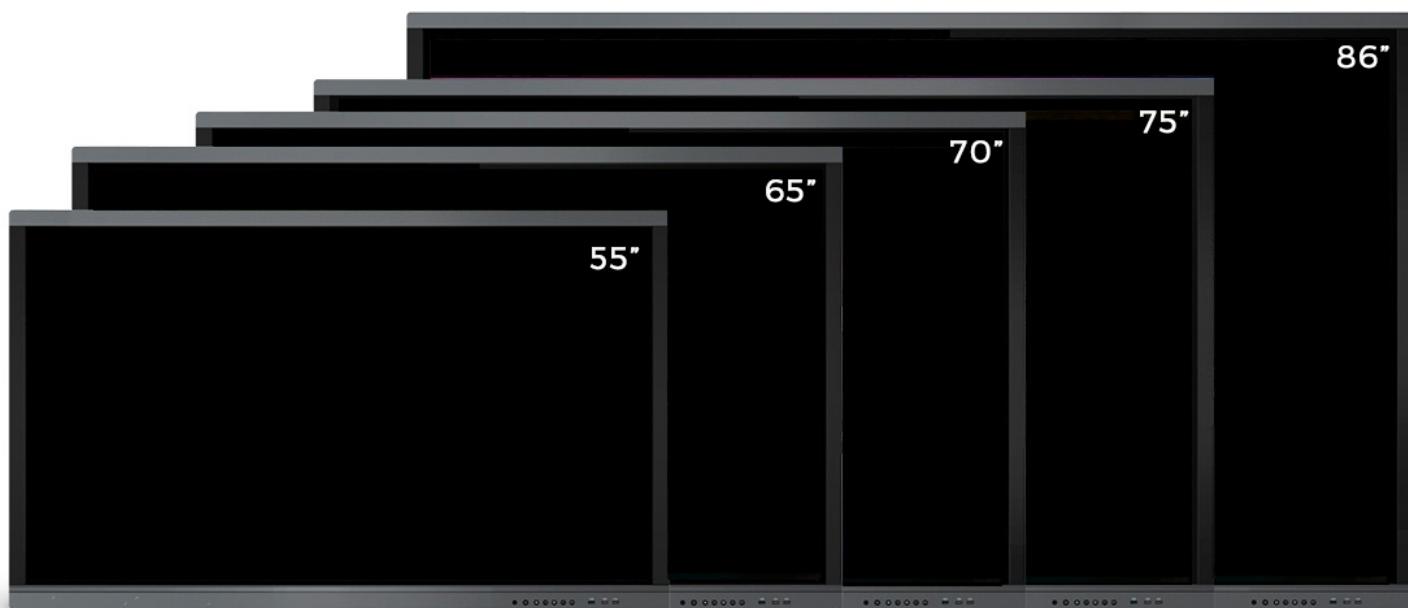
E-SERIES

INTERACTIVE  
FLAT  
PANEL



# Interactive Flat Panel Empower **Teaching & Learning**

We provide a powerful education solution that is ideal for classroom, teaching and learning.



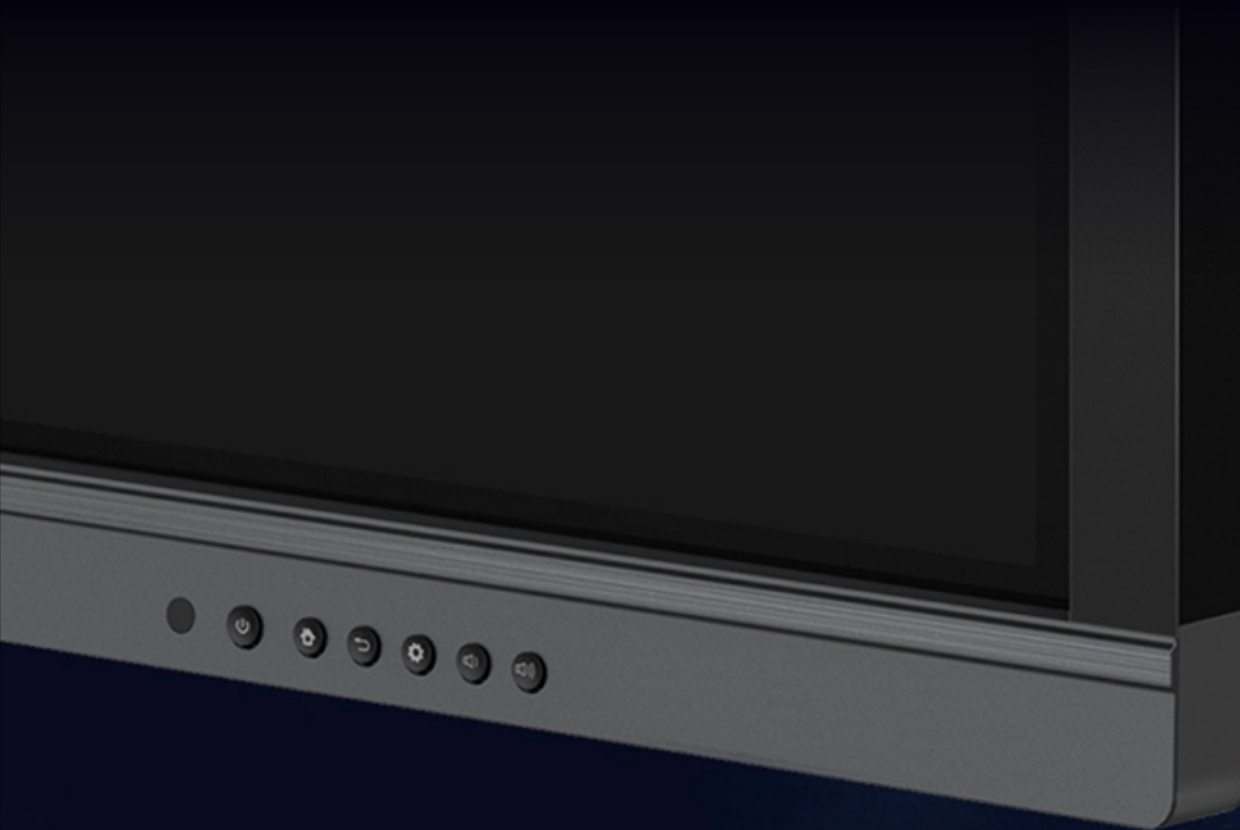
Consistent design available in 55", 65", 70" 75" & 86"



# Ultra-thin Design

Ultra-thin design & ultra-narrow appearance.  
Front physical buttons, easy to turn on/off,  
set up, switch.

Front USB interface, anti-collision, accessible to  
PC, Android sources.





**BIG  
VUE**

# High Accurate **Touch** Experience

Supports  
**20** simultaneous  
points multi-touch.

Writing, annotating and screenshots  
at any channel.

Creating accurate and smooth touch,  
writing experience.




# Zero Bonding

The IFP Has the Zero Bonding Between  
the panel and the Glass and Hence provide  
Excellent Writing Experience.



# A Versatile Pen | V-WRITE



Write fluently with one pen  
Bring up a whiteboard by touching  
Flip pages quickly with one key

## Multi OS + Multi Module

Built-in 2nd high performance  
Android module.

Pluggable PC module  
is selectable and detachable Wi-Fi  
module. Whiteboard and multimedia  
playback could be realized  
at any system.



**BIG  
VUE**

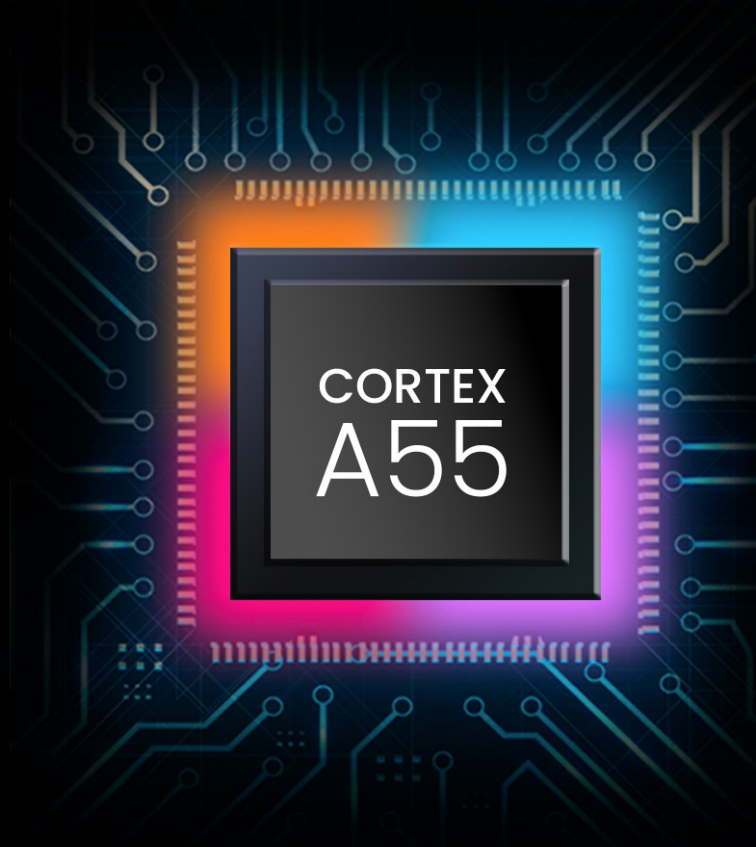
**BIG  
VUE**

## Fully reach the parameter indicators Innovative improvement in performance

As VUTEC enhanced edition adopts a brand-new mainboard and CORTEX-A55 architecture, it offers ultra-powerful performance, fast response, and excellent computing capability, operating stably under continuous high frequency.

**3GB RAM**

**32GB Storage capacity**



# WiFi 5

## **Dual-band WiFi 2.4G/5G**

**Dual frequencies are available simultaneously**

Higher speed, stability, and low delayed connection are attributed to 2.4G/5G dual-band WiFi and intelligent algorithm optimization, resulting in smooth web browsing, fast transmission of large files, and video conferences without delay.



# Smartphone/PC fast screen casting Implement audio & video synchronization by one-click

Built-in extended screen mirroring function can synchronize audio & video of screencasting.





MODEL			BVE1165	BVE1175	BVE1186
OS			Android 11	Android 11	Android 11
Size			65	75	86
Landscape/Portrait			Landscape	Landscape	Landscape
LCD Panel	Resolution		3,840 x 2,160 dots	3,840 x 2,160 dots	3,840 x 2,160 dots
	Maximum Display colors		10.7billion color	10.7billion color	10.7billion color
	Max. Brightness (average)		typical 350cd/m2	typical 350cd/m2	typical 350cd/m2
	Contrast ratio		1200:1	1200:1	1200:1
	Viewing Angle		H/V178° (CR≥10)	H/V178° (CR≥10)	H/V178° (CR≥10)
Response Time			8 ms (Gray to Gray, Ave.)	8 ms (Gray to Gray, Ave.)	8 ms (Gray to Gray, Ave.)
Touch screen	Touch Technology		IR	IR	IR
	Multi Touch		40 points	40 points	40 points
	Pen tip size		2.8mm/8mm	2.8mm/8mm	2.8mm/8mm
	PC Connection Port		USB(Type B) x 4 (Front x 1, Rear x 3)	USB(Type B) x 4 (Front x 1, Rear x 3)	USB(Type B) x 4 (Front x 1, Rear x 3)
	Protection Glass		3.2mm/AG coating	3.2mm/AG coating	3.2mm/AG coating
	Parallax		Glass: 3.2mm, Air gap 0.5mm, 0-Bonding	Glass: 3.2mm, Air gap 0.5mm, 0-Bonding	Glass: 3.2mm, Air gap 0.5mm, 0-Bonding
Compatible OS			Windows8.1/10/11, ChromeOS, MacOS10.15/11/12	Windows8.1/10/11, ChromeOS, MacOS10.15/11/12	Windows8.1/10/11, ChromeOS, MacOS10.15/11/12
IO ports	Front	Front	TYPE-C/HDMI/TOUCH-USB/PUBLIC USBx2	TYPE-C/HDMI/TOUCH-USB/PUBLIC USBx2	TYPE-C/HDMI/TOUCH-USB/PUBLIC USBx2
	Rear	Side	LAN1/LAN2/HDMI/TOUCH-USB/RS232/MIC-IN/AUDIO-OUT/USB2.0/USB3.0	LAN1/LAN2/HDMI/TOUCH-USB/RS232/MIC-IN/AUDIO-OUT/USB2.0/USB3.0	LAN1/LAN2/HDMI/TOUCH-USB/RS232/MIC-IN/AUDIO-OUT/USB2.0/USB3.0
Expansion Slot			OPS	OPS	OPS
Speaker			15W+15W (Front)	15W+15W (Front)	15W+15W (Front)
Operation hour			16H	16H	16H
Android	CPU		A55 *4 (Quad core)	A55 *4 (Quad core)	A55 *4 (Quad core)
	Memory/ Storage		3GB/32G	3GB/32G	3GB/32G
	Version		Android 11	Android 11	Android 11
	Wireless LAN	Standard System	IEEE802.11ac/n/a/g/b /ax Compliant	IEEE802.11ac/n/a/g/b /ax Compliant	IEEE802.11ac/n/a/g/b /ax Compliant
			built-in wifi	built-in wifi	built-in wifi
Appearance	Mounting		VESA Compliant	VESA Compliant	VESA Compliant
	Front button		POWER/HOME/BACK/SETTING/VOL-/VOL+	POWER/HOME/BACK/SETTING/VOL-/VOL+	POWER/HOME/BACK/SETTING/VOL-/VOL+
	Bezel width		65" 17.7/17.7/17.7/49.01mm	65" 17.7/17.7/17.7/49.01mm	65" 17.7/17.7/17.7/49.01mm
Software	White board		V-WRITE	V-WRITE	V-WRITE
	Wireless screen sharing		V-SHARE	V-SHARE	V-SHARE
	File explorer		Default File Explorer	Default File Explorer	Default File Explorer
	Media player		Default Media Player	Default Media Player	Default Media Player
	Annotation		Yes	Yes	Yes
	Setting		Yes	Yes	Yes
	IWB Launcher		Default IWB Launcher	Default IWB Launcher	Default IWB Launcher
	WEB browser		Default WEB Browser	Default WEB Browser	Default WEB Browser
	PDF viewer		WPS office (latest English version)	WPS office (latest English version)	WPS office (latest English version)
Updater			Default Updater	Default Updater	Default Updater
Power Supply			AC 100 V ~ 240 V, 50/60 Hz	AC 100 V ~ 240 V, 50/60 Hz	AC 100 V ~ 240 V, 50/60 Hz
Power consumption			220W	300W	380W
Condition	Operating temperature		0 ~ 40°C	0 ~ 40°C	0 ~ 40°C
	Operating humidity		20~80% (No condensation)	20~80% (No condensation)	20~80% (No condensation)
Dimensions(Only Display)			1482.1mmx87.7mmx897.4mm	1716.5mmx86.9mmx1031.8mm	1961.8mmx87.7mmx1169.9mm
Weight			50KG	69KG	78KG
Packing Dimension (Weight)			1640mm×185mm×1010mm	1860mm×185mm×1125mm	2095mm×185mm×1265mm
Function	Power control (Power)		YES	YES	YES
	Keep input selection		YES	YES	YES
	Remote controller		YES	YES	YES
	RS232 command control		YES	YES	YES
	OTA Update		YES	YES	YES
	Saving at annotation		YES	YES	YES
Accessories	Power code		x1 (3pin, 3 m)	x1 (3pin, 3 m)	x1 (3pin, 3 m)
	Remote controller		x1	x1	x1
	Remote control unit battery		AAA size x 2	AAA size x 2	AAA size x 2
	e-manual		x1	x1	x1
	USB-C cable		x1 (1.8m), optional	x1 (1.8m), optional	x1 (1.8m), optional
	USB A-B cable		x1 (3m)	x1 (3m)	x1 (3m)
	HDMI cable		x1 (3m)	x1 (3m)	x1 (3m)
Touch pen			x2	x2	x2

**BIG  
VUE**

